



March 12, 2024

Dear Local Official:

**RE: Bridge Maintenance and Repair
BIN 1003712 Interstate 88 (I88) over State Route 369
Town of Fenton, Broome County**

The New York State Department of Transportation (NYSDOT) would like to notify you of upcoming bridge repair work in your community. Bridge Identification Number (BIN) 1003712, which carries Interstate 88 (I88) over State Route 369 in the town of Fenton, Broome County, was damaged by a vehicle impact. The bridge is safe for travel but requires repairs.

Repair work is scheduled to begin on April 15, 2024 and to last approximately three weeks. This schedule is dependent upon weather and resource availability.

During the repair work, traffic on State Route 369 will be reduced to a single lane controlled via temporary traffic signals to allow for both directions of travel. In addition, Park Street between State Route 369 and Canal Street will be closed to all traffic, both vehicle and pedestrian, during the repair work. All traffic will be directed to an approximately 0.2 mile detour on Albany Street and Canal Street during this time. A bridge location map and detour map are enclosed for your reference.

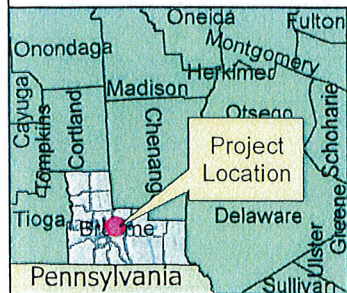
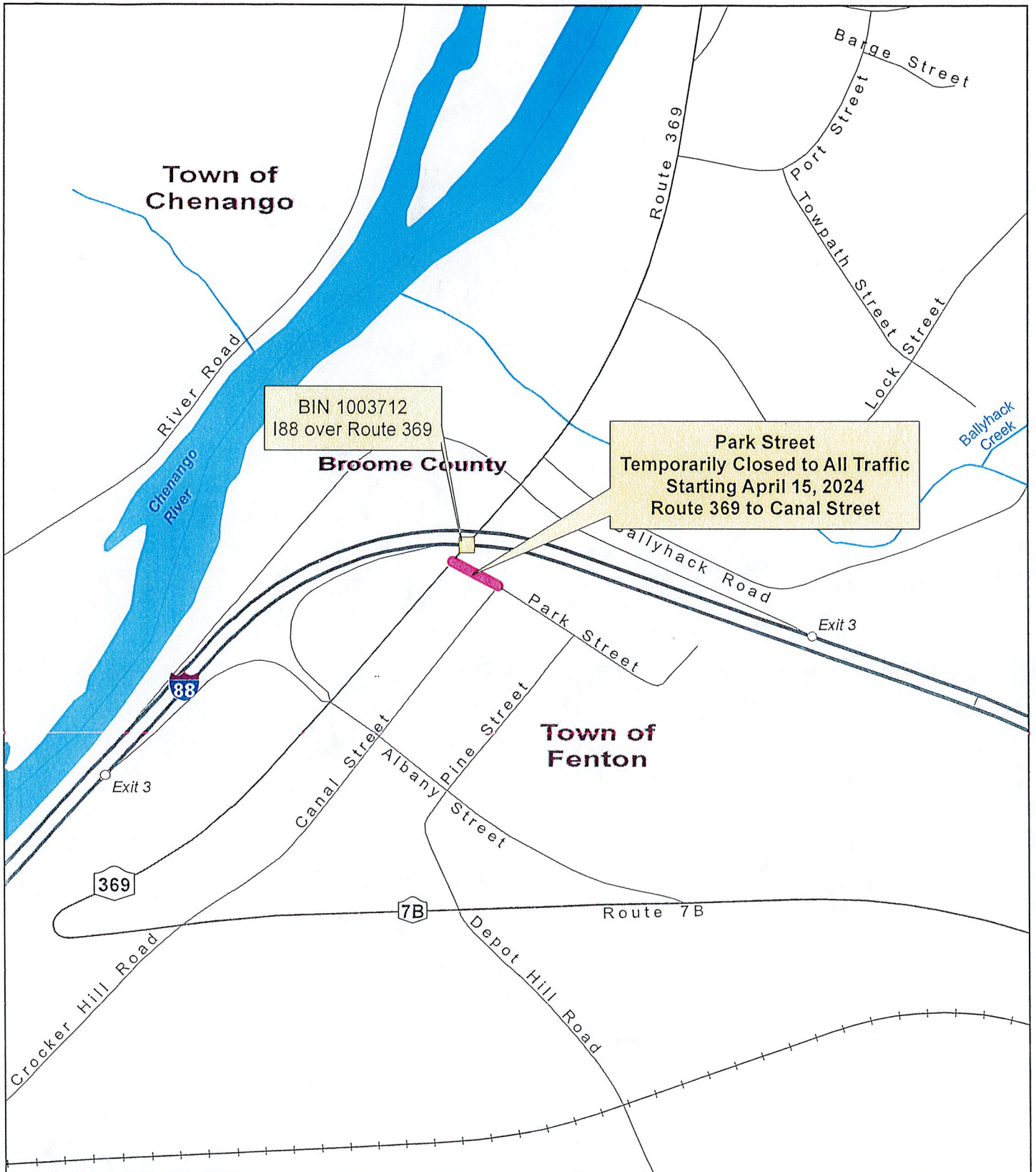
If you have any questions or concerns, please contact Mike Ford, Assistant Engineer, by mail at Region 9 Bridge Maintenance, 97 Barlow Road-Building 2, Binghamton, NY 13904; by telephone at (607) 222-2089 or by email at Michael.Ford@dot.ny.gov.

Please feel free to share this letter with your constituents, neighbors, or anyone else that may have interest in this information.

Sincerely,

Kathryn Mangan
Acting Regional Planning & Program Manager

Enclosure/sp

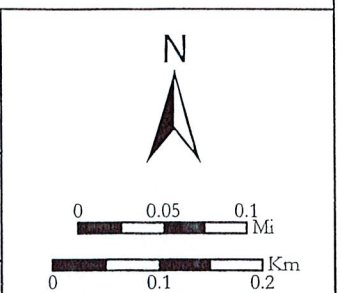


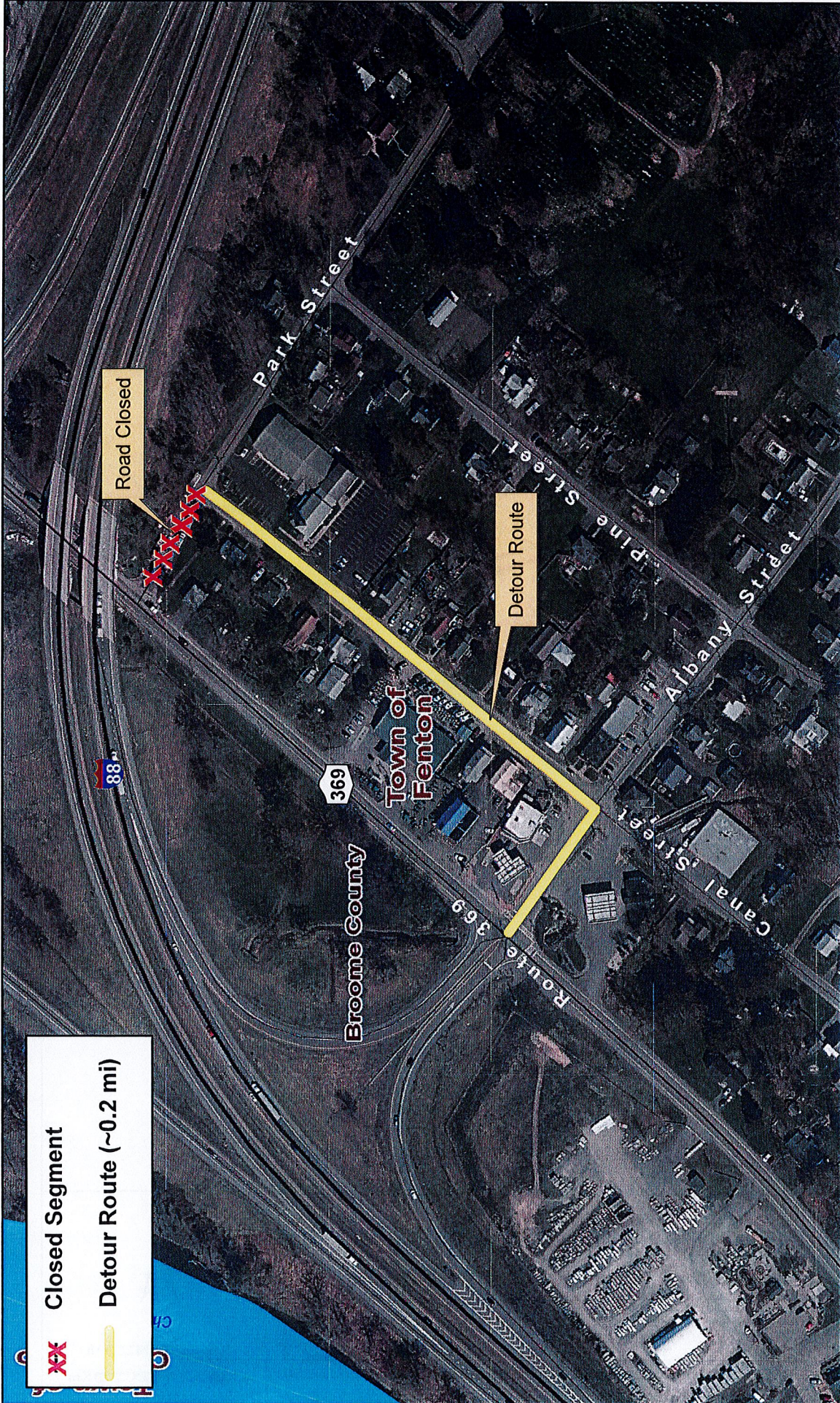
Bridge Location
Interstate 88 over State Route 369
Town of Fenton, Broome County

Esri, HERE, Garmin, FAO, NOAA, USGS, EPA, NPS, County of Broome, Province of Ontario, Esri Canada, Esri, HERE, Garmin, INCREMENT P, Intermap, USGS, METI/NASA, EPA, USDA

2024

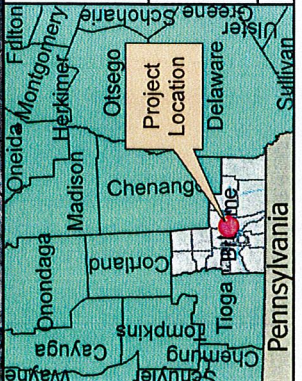
Coordinate System: NAD 1983 UTM Zone 18N





X Closed Segment

— Detour Route (~0.2 mi)



Bridge Repair: Park Street Detour Map
Canal Street and Albany Street
Town of Fenton, Broome County

Esri, HERE, Garmin, FAO, NOAA, USGS, EPA, NPS, NYS ITS Geospatial Services, Westchester County GIS, County of Broome, Province of Ontario, Esri Canada, Esri, HERE, Garmin, INCREMENT P, USGS, EPA, USDA

2024

Coordinate System: NAD 1983 UTM Zone 18N